

## 10 MAINTENANCE AND CLEANING

**STECHNICS**

The following points have to be considered during the inspection:

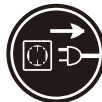
- 1) All screws for installing the devices or parts of the device have to be tightly connected and must not be corroded.
- 2) There must not be any deformations on the housing, color lenses, fixations and installation spots (ceiling, suspension, trussing).
- 3) Mechanically moved parts must not show any traces of wearing and must not rotate with unbalances.
- 4) The electric power supply cables must not show any damage, material fatigue or sediments.

Further instructions depending on the installation spot and usage have to be adhered by a skilled installer and any safety problems have to be removed.



### CAUTION

Disconnect from mains before starting maintenance operation.



In order to make the lights in good condition and extend the life time, we suggest a regular cleaning to the lights.

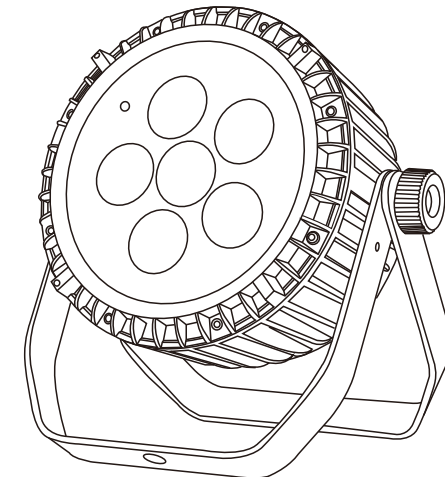
- 1) Clean the inside and outside lens each week to avoid the weakness of the lights due to accumulation of dust.
- 2) Clean the fan each week.
- 3) A detailed electric check by approved electrical engineer each three month, make sure that the circuit contacts are in good condition, prevent the poor contact of circuit from overheating.

We recommend a frequent cleaning of the device. Please use a moist, lint- free cloth. Never use alcohol or solvents.

There are no serviceable parts inside the device. Please refer to the instructions under "Installation instructions".

Should you need any spare parts, please order genuine parts from your local dealer.

# BATTERY PAR 618



CE F ⚡ IP65  $t_a: 40^\circ\text{C}$   $t_c: 150^\circ\text{C}$

## User Manual

KEEP THIS MANUAL FOR FUTURE NEEDS

# 1 SAFETY INSTRUCTIONS



## CAUTION

Becareful with your operations. With a dangerous voltage you cansuffer a dangerous electric shock when touching wires!

This device has left the factory in perfect condition. In order to maintain this condition and to ensure a safe operation, it is absolutely necessary for the user to follow the safety instructions and warning notes written in this user manual.



## IMPORTANT

Damages caused by the disregard of this user manual are not subject to warranty. The dealer will not accept liability for any resulting defects or problems.

If the device has been exposed to temperature changes due to environmental changes, do not switch it on immediately. The arising condensation could damage the device. Leave the device switched off until it has reached room temperature.

This device falls under protection-class I. Therefore it is essential that the device be earthed.

The electric connection must carry out by qualified person.

The device shall only be used with rate voltage and frequency.

Make sure that the available voltage is not higher than stated at the end of this manual.

Make sure the power cord is never crimped or damaged by sharp edges. If this would be the case, replacement of the cable must be done by an authorized dealer.

Always disconnect from the mains, when the device is not in use or before cleaning it. Only handle the power cord by the plug. Never pull out the plug by tugging the power cord.

During initial start-up some smoke or smell may arise. This is a normal process and does not necessarily mean that the device is defective, it should decrease gradually.

Please don't project the beam onto combustible substances.

Fixtures cannot be installed on combustible substances, keep more than 50cm distance with wall for smooth air flow, so there should be no shelter for fans and ventilation for heat radiation.

If the external flexible cable or cord of this luminaire is damaged, it shall be exclusively replaced by the manufacturer or his service agent or a similar qualified person in order to avoid a hazard.

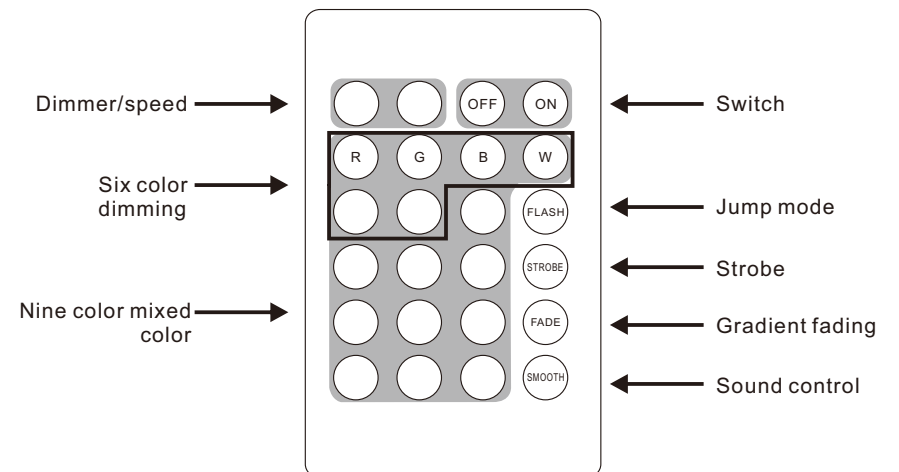
# 9 DMX CHANNELS

## 6CH Mode

Channel	Function	Description
1	Red	Red dimmer,linear dimmer,from dark to bright
2	Green	Green dimmer,linear dimmer,from dark to bright
3	Blue	Blue dimmer,linear dimmer,from dark to bright
4	White	White dimmer,linear dimmer,from dark to bright
5	Amber	Amber dimmer,linear dimmer,from dark to bright
6	UV	UV dimmer,linear dimmer,from dark to bright

## 10CH Mode

Channel	Function	Description
1	Dimmer	Dimmer,linear dimmer,from dark to bright
2	Red	Red dimmer,linear dimmer,from dark to bright
3	Green	Green dimmer,linear dimmer,from dark to bright
4	Blue	Blue dimmer,linear dimmer,from dark to bright
5	White	White dimmer,linear dimmer,from dark to bright
6	Amber	Amber dimmer,linear dimmer,from dark to bright
7	UV	UV dimmer,linear dimmer,from dark to bright
8	Strobe	Strobe from slow to fast
9	selection	0-8:Close; 9-50: Mixed color pattern;51-100:Jump fading; 101-150:mutation ;151--200:Fading mode;201-220:sound control 1;221-240:sound control 2;241-255:Sound control3
10	Speed	Function of speed,suspended from slow to fast (9CH and 10CH together)



Display setting description: A, menu SHOUS icon in WIFI MODE mode, below the WiFi icon, the word "NO WIFI" is displayed. This version has no mobile APP control function. The "WiFi-XXX" is displayed under the WiFi icon. This version has mobile APP control function. XXX stands for 3 digits and is the address of this light.

B, after the menu HELP icon is determined, the information query bar appears, and the up and down keys can select the two microcodes installed in the mobile APP, and the scan code can be installed.

C, mobile phone WIFI control operation steps are as follows: 1 step to install the control light APP; 2 step light display function switch to WIFI mode. 3 steps to open the settings icon on the phone, open WIFI and search WIFI address, appear with the beginning of the LED. For example, "LED-XXX", click the link, open the mobile phone installed APP in 4 steps, and the link is successful.

D, update the mobile APP, first delete the mobile phone installation "LED WIFI" APP, and then scan the code in the operation menu function of the light.

E, wireless DMX 512 control settings:

In the first step, when using the DMX512 wireless transmitter to control the machine, first select all the lamps to the A001 control mode, the DM512 controller and the DM512 wireless transmitter to connect the signal lines, and the console is powered.

In the second step, press and hold the function button on the wireless DM512 transmitter, power on, and clear the data to all connected slaves.

In the third step, the function of the wireless DM512 transmitter is selected to the transmission mode. After the connection and pairing, the small dots in the lower part of the lamp display will flash, and the lamp is in the connected control state.

The fourth step, if the wireless DM512 transmitter does not have the clear function, the data is cleared to all the lamps individually, and after the data is cleared, the pairings are set in the fixture. (If the pairing is successful, it depends on the display of the lamps. Whether the dot is flashing or not, a flashing indicates that the pairing is successful and the DM512 can be controlled.

Floor slave data clearing and setting (main for multiple lamps, when controlling from wireless connection, first set the lamps to slave mode.

In the first step, the menu is selected to confirm in DM512 mode.

In the second step, the menu is selected to the SET function. After confirming, enter the function selection. Press the up button to select the 6th item "2.4g Mode" to confirm, the slave mode to select 1, the Slave Mode function to confirm,

In the third step, after selecting the menu to the SET function, enter the function selection after confirming, press the up key to select the second item "2.4g wireless" to confirm here. At this time, wait for the data to be cleared and display OK. (The OK status cannot be confirmed again)

In the fourth step, after setting the function, return the function to the DMX 512 menu. After confirmation, the menu is displayed as Slave receiving mode.

In the fifth step, power off and power on again.

G, host data clearing and pairing connection settings (main for multiple lamps, when wireless control, first set the lamps to the slave mode, select a cooker as the host.

In the first step, the menu is selected to confirm in DM512 mode.

In the second step, the menu is selected to the SET function. After confirming, enter the function selection. Press the up button to select the sixth item "2.4g Mode" to confirm, the host mode is selected, and the Mast Mode function is confirmed.

In the third step, the menu is selected to the SET function. After confirming, enter the function selection. Press the up button to select the second item "2.4g wireless" to confirm here. Wait for the data to be cleared at this time. After the display is OK, press the confirmation wait and wait. With the pairing setting, (if the pairing is successful, it will see if the dot on the slave display flashes), and the flashing will indicate that the pairing is successful.

In the fourth step, the menu is selected as a self-propelled exhibition or a voice-activated Soud mode as a host.

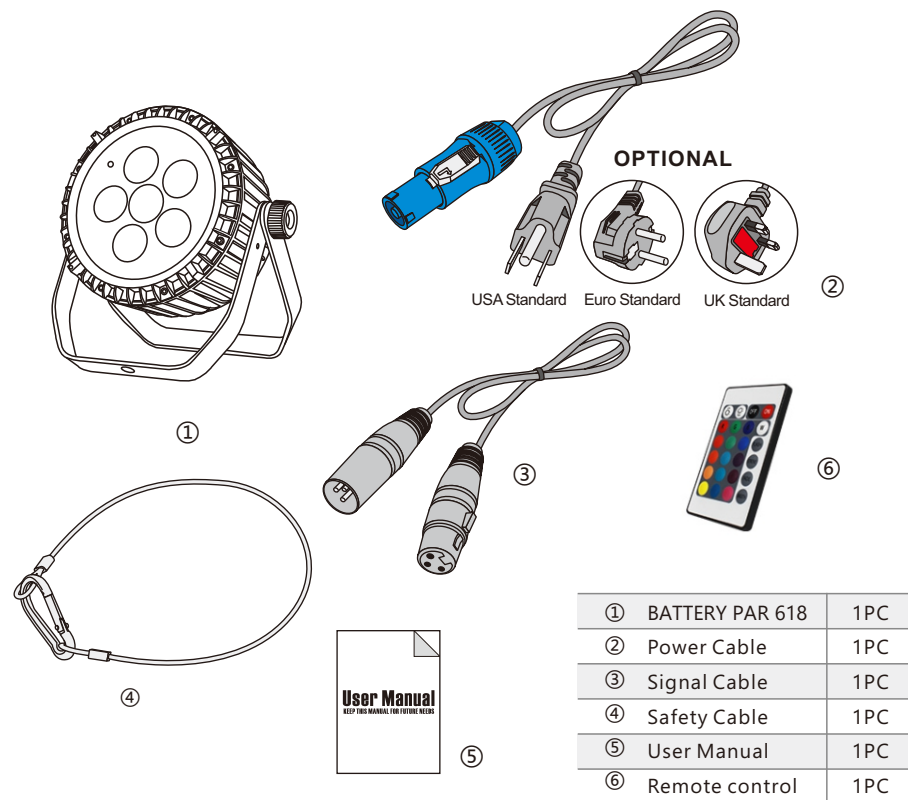
In the fifth step, power off and power on again.

## 2 UNPACKING

Thank you for choosing our BATTERY PAR 618. For your own safety, please read this manual before installing the device. This manual covers the important information on installation and applications. Please install and operate the fixture with following instructions. Meanwhile, please keep this manual well for future needs.

The BATTERY PAR 618 is made of a new type of high temperature strength of cast aluminum casing with nice outlook. The fixture is designed and manufactured strictly following CE standards, complying with international standard DMX512 protocol. It's available independently controlled and linkable with each other for operation. And it is applicable for large-scale live performances, theater, studio, nightclubs and discos.

The BATTERY PAR 618 adopts 6PCS high power 18W 6-IN-1LEDs (RGBAW+UV) which features high brightness and stability. Please carefully unpack it when you receive the fixture and check whether it is damaged during the transportation. And please check whether the following items are included inside the box:



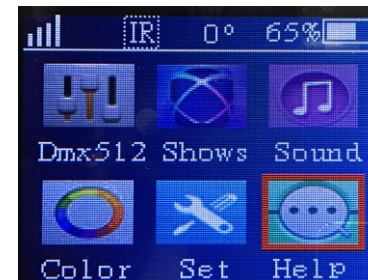
### 3 FEATURES & SPECIFICATIONS

#### Features

- 6\*18W 6-in-1 LEDs (RGBAW+UV)
- 50000 Hours life span and low power consumption
- 15° Beam angle
- Smooth and pure color mixing capability
- 0-100% Linear dimming
- 6/10 DMX channels USITT DMX-512
- DMX512, Master-Slave, Sound Activated and auto operation
- 4 Sound modes available
- 4 Auto operation modes available
- 2 Color modes available (customized color mode and static color mode)
- Built-in programs that could be called up via a DMX controller
- 25T/sec high speed LED shutter/strobe effect with variable speed
- 2.4G Wireless Solution system built-in for wireless operation
- Compatible with UC IR wireless remote (6 colors with dimming, 9 mixing color options, auto color mode, strobe mode, auto fading mode, sound mode, master dimming and speed, IR ON/OFF)
- Rechargeable Li-ion battery built-in (auto charging once plugging in the power cable, 20 fixtures linkable in daisy chain)
- Battery Charge Time is 4 Hours (3A)
- 1.8" TFT LCD display with 4 control buttons
- Display auto OFF time optional
- Display backlight color adjustable
- Display backlight brightness adjustable
- Fixture running time display available
- Fixture operation temperature display available
- IP65 Seetronic POWERCON IN&OUT
- IP65 Seetronic 3-pin XLR connectors IN/OUT
- Power switch available
- Vent valve available
- Aluminum die-casting structure design with optimum cooling system
- Dual mounting brackets for ground or hanging application
- IP65 protection rating
- -20 to 45 ambient temperature

### 8 MENU OPERATIONS

DMX512	Shows	Sound	Color	Set	Help
A001	1.Auto Color (0-99)	1.Sound Mode 1 (0-100)	1.Custom Color R:0-255 G:0-255 B:0-255 W:0-255 Y:0-255 U:0-255	1.Dmx channel 6CH/10CH	Name: 6Color
	2.Auto Fade (0-99)	2.Sound Mode 2 (0-100)		2.4g wireless ON/OFF	Version: V4.3
	3.Auto Sudden (0-99)	3.Sound Mode 3 (0-100)		3.Infrarrd ON/OFF	Dmx Channel:
	4.Auto Strobe (0-99)	4.Sound Mode 4 (0-100)		4.Display backlight 0-100%	Run Time:
	5.Wifi Mode APP control		2.Static Color	5.Lcd Cose time 1.Open 2. 5S 3.10S 4.15S 5.30S	User Time:
				6.2.4g Mode 1.DMX Mode 2.Slave Mode 3.Master Mode	Temperature:
				7.Restore factory 8888	
				8.MANUAL 6666	
				9.Temperature ON/OFF	
				10.Battery ON/OFF	
				11.Background Color	



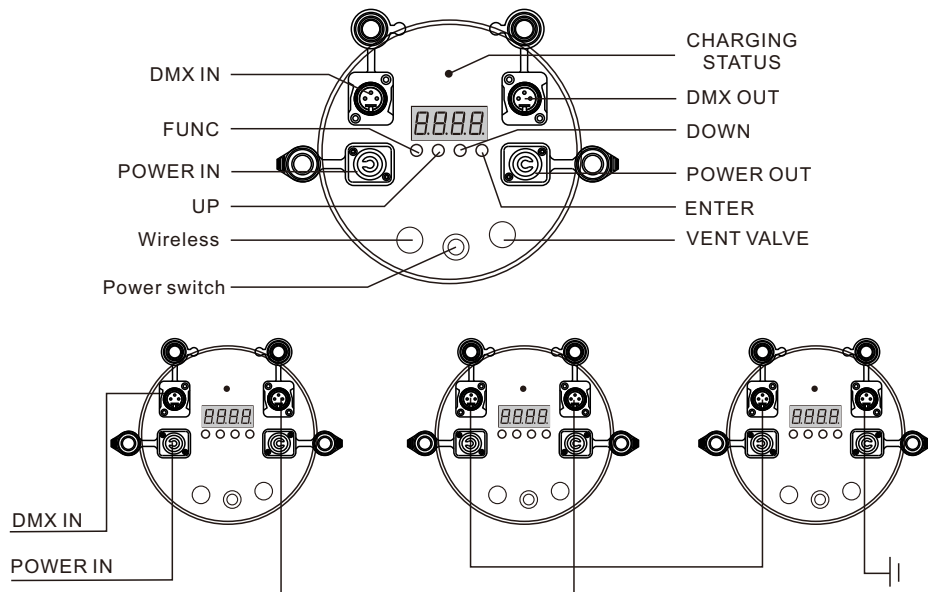
Regardless of the rigging option you choose for your BATTERY PAR 618 always be sure to secure your fixture with a safety cable. The fixture provides a built-in rigging point for a safety cable on the hanging bracket as illustrated above. Be sure to only use the designated rigging point for the safety cable and never secure a safety cable to a carrying handle.

## 7 DMX-512 CONTROL CONNECTIONS

Connect the provided XLR cable to the female 3-pin XLR output of your controller and the other side to the male 3-pin XLR input of the par can. You can chain multiple

Par can together through serial linking. The cable needed should be two core, screened cable with XLR input and output connectors. Please refer to the diagram below.

DMX-512 connection with DMX terminator



## Specifications

**Input Voltage:** AC90-260V 50/60Hz

**LED Quantities:** 6\*18W 6-IN-1 LEDs (RGBAW+UV)

**Control Signal:** DMX512, master-slave and sound activated or auto operation

**Control Channel:** 6/10 DMX Channels

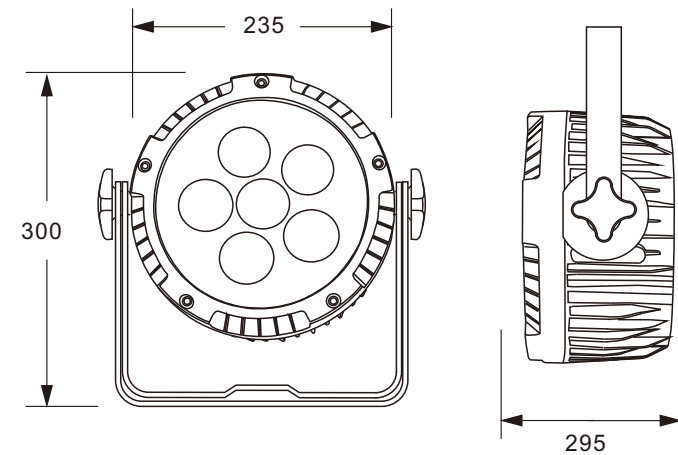
**Power Consumption:** 110W

**Dimensions:** 295(D)\*235(W)\*300(H)mm

**Packing Dimensions:** 270(D)\*270(W)\*300(H)mm

**Net Weight:** 4.5kg

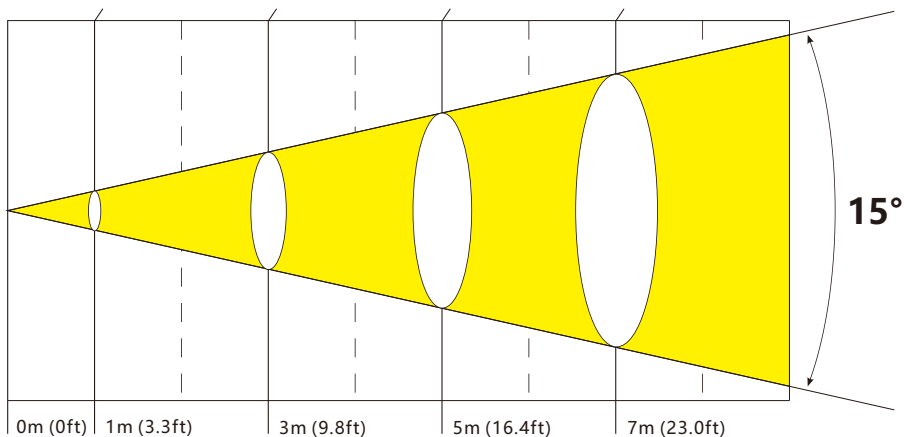
**Gross Weight:** 5.3kg



## 4 PHOTOMETRIC DATA

### Photometric Beam Angle Data $15^\circ$ Beam Angle $LUX \times 0.0929=FC$

<b>R</b>	60 / 636	8 / 88	3 / 33	2 / 22
<b>G</b>	174 / 1870	20 / 209	8 / 82	4 / 46
<b>B</b>	194 / 1980	21 / 231	9 / 93	5 / 50
<b>W</b>	220 / 2365	30 / 321	15 / 121	6 / 68
<b>A</b>	60 / 858	8 / 87	3 / 33	2 / 20
<b>UV</b>	29 / 308	3 / 34	1 / 15	0 / 9
<b>RGBW+UV</b>	664 / 7150	85 / 913	34 / 374	18 / 200 (FC/LUX)



## 5 OPERATION INSTRUCTIONS

- The BATTERY PAR 618 is an LED wash light for on-site decoration purpose.
- Don't turn on the fixture if it's been through severe temperature difference like after transportation because it might damage the light due to the environment changes. So make sure to operate the fixture until it is in normal temperature.
- This light should be keep away from strong shaking during any transportation or movement.
- Don't pull up the light by only the head, or it might cause damages to the mechanical parts.
- Don't expose the fixture in overheat, moisture or environment with too much dust when installing it. And don't lay any power cables on the floor. Or it might cause electronic shock to the people.
- Make sure the installation place is in good safety condition before installing the fixture.
- Make sure to put the safety chain and check whether the screws are screwed properly when installing the fixture.

- The BATTERY PAR 618 is an LED wash light for on-site decoration purpose.
- Don't turn on the fixture if it's been through severe temperature difference like after transportation because it might damage the light due to the environment changes. So make sure to operate the fixture until it is in normal temperature.
- This light should be keep away from strong shaking during any transportation or movement.
- Don't pull up the light by only the head, or it might cause damages to the mechanical parts.
- Don't expose the fixture in overheat, moisture or environment with too much dust when installing it. And don't lay any power cables on the floor. Or it might cause electronic shock to the people.
- Make sure the installation place is in good safety condition before installing the fixture.
- Make sure to put the safety chain and check whether the screws are screwed properly when installing the fixture.
- Make sure the lens are in good condition. It's recommended to replace the units if there are any damages or severe scratch.
- Make sure the fixture is operated by qualified personnel who knows the fixture before using.
- Keep the original packages if any second shipment is needed.
- Don't try to change the fixtures without any instruction by the manufacturer or the appointed repairing agencies.
- It is not in warranty range if there are any malfunctions from not following the user manual to operate or any illegal operation, like shock short circuit, electronic shock, lamp broke, etc.

## 6 INSTALLATIONS

**Cautions:** For added protection mount the fixtures in areas outside walking paths, seating areas, or in areas were the fixture might be reached by unauthorized personnel.

Before mounting the fixture to any surface, make sure that the installation area can hold a minimum point load of 10 times the device's weight.

Fixture installation must always be secured with a secondary safety attachment, such as an appropriate safety cable.

Never stand directly below the device when mounting, removing, or servicing the fixture.