

## 10 MAINTENANCE AND CLEANING

The following points have to be considered during the inspection:

- 1) All screws for installing the devices or parts of the device have to be tightly connected and must not be corroded.
- 2) There must not be any deformations on the housing, color lenses, fixations and installation spots (ceiling, suspension, trussing).
- 3) Mechanically moved parts must not show any traces of wearing and must not rotate with unbalances.
- 4) The electric power supply cables must not show any damage, material fatigue or sediments.

Further instructions depending on the installation spot and usage have to be adhered by a skilled installer and any safety problems have to be removed.



### CAUTION

Disconnect from mains before starting maintenance operation.



In order to make the lights in good condition and extend the life time, we suggest a regular cleaning to the lights.

- 1) Clean the inside and outside lens each week to avoid the weakness of the lights due to accumulation of dust.
- 2) Clean the fan each week.
- 3) A detailed electric check by approved electrical engineer each three month, make sure that the circuit contacts are in good condition, prevent the poor contact of circuit from overheating.

We recommend a frequent cleaning of the device. Please use a moist, lint- free cloth. Never use alcohol or solvents.

There are no serviceable parts inside the device. Please refer to the instructions under "Installation instructions".

Should you need any spare parts, please order genuine parts from your local dealer.

# STECHNICS

## STROBE RGB960M



CE V  IP20 t<sub>a</sub>:40°C t<sub>c</sub>:150°C

# User Manual

KEEP THIS MANUAL FOR FUTURE NEEDS

# 1 SAFETY INSTRUCTIONS



## CAUTION

Becareful with your operations. With a dangerous voltage you can suffer a dangerous electric shock when touching wires!

This device has left the factory in perfect condition. In order to maintain this condition and to ensure a safe operation, it is absolutely necessary for the user to follow the safety instructions and warning notes written in this user manual.



## IMPORTANT

Damages caused by the disregard of this user manual are not subject to warranty. The dealer will not accept liability for any resulting defects or problems.

If the device has been exposed to temperature changes due to environmental changes, do not switch it on immediately. The arising condensation could damage the device. Leave the device switched off until it has reached room temperature.

This device falls under protection-class I. Therefore it is essential that the device be earthed.

The electric connection must carry out by qualified person.

The device shall only be used with rated voltage and frequency.

Make sure that the available voltage is not higher than stated at the end of this manual.

Make sure the power cord is never crimped or damaged by sharp edges. If this would be the case, replacement of the cable must be done by an authorized dealer.

Always disconnect from the mains, when the device is not in use or before cleaning it. Only handle the power cord by the plug. Never pull out the plug by tugging the power cord.

During initial start-up some smoke or smell may arise. This is a normal process and does not necessarily mean that the device is defective, it should decrease gradually.

Please don't project the beam onto combustible substances.

Fixtures cannot be installed on combustible substances, keep more than 50cm distance with wall for smooth air flow, so there should be no shelter for fans and ventilation for heat radiation.

If the external flexible cable or cord of this luminaire is damaged, it shall be exclusively replaced by the manufacturer or his service agent or a similar qualified person in order to avoid a hazard.

### CH32Channel description:

passage way	Channel value	basic function
1	000-255	Section 1 three in one red light bead linear dimming
2	000-255	Section 1 three in one green light bead linear dimming
3	000-255	Section 1 three in one blue light bead linear dimming
4	000-255	Section 2 three in one red light bead linear dimming
5	000-255	Section 2 three in one green light bead linear dimming
6	000-255	Section 2 three in one blue light bead linear dimming
...	...	...
22	000-255	Section 8 three in one red light bead linear dimming
23	000-255	Section 8 three in one green light bead linear dimming
24	000-255	Segment 8 three in one blue light bead linear dimming
25	000-255	Section 1 white light bulb linear dimming
26	000-255	Linear dimming of section 2 white light bulb
27	000-255	Section 3 white light bulb linear dimming
28	000-255	Section 4 white light bulb linear dimming
29	000-255	Section 5 white light bulb linear dimming
30	000-255	Section 6 white light bulb linear dimming
31	000-255	Section 7 white light bulb linear dimming
32	000-255	Section 8 white light bulb linear dimming

### CH39Channel description:

passage way	Channel value	basic function
1	000-255	Total dimming
2	000-255	Three in one stroboscopic
3	000-255	The first mock exam is the first mock exam. Three in one mode (see: six, three in one mode).
4	000-255	Three in the first mock exam speed
5	000-255	Section 1 three in one red light bead linear dimming
6	000-255	Section 1 three in one green light bead linear dimming
7	000-255	Section 1 three in one blue light bead linear dimming
...	...	...
26	000-255	Section 8 three in one red light bead linear dimming
27	000-255	Section 8 three in one green light bead linear dimming
28	000-255	Segment 8 three in one blue light bead linear dimming
29	000-255	White stroboscopic
30	000-255	White light mode (see VI. white light mode effect for details)
31	000-255	White light mode speed
32	000-255	Section 1 white light bulb linear dimming
33	000-255	Linear dimming of section 2 white light bulb
34	000-255	Section 3 white light bulb linear dimming
35	000-255	Section 4 white light bulb linear dimming
36	000-255	Section 5 white light bulb linear dimming
37	000-255	Section 6 white light bulb linear dimming
38	000-255	Section 7 white light bulb linear dimming
39	000-255	Section 8 white light bulb linear dimming

## 9 DMX CHANNELS

### CH04Channel description:

passa geway	Channel value	basic function
1	000-255	Red bead linear dimming
2	000-255	Green bulb linear dimming
3	000-255	Blue bead linear dimming
4	000-255	White bulb linear dimming

### CH11Channel description:

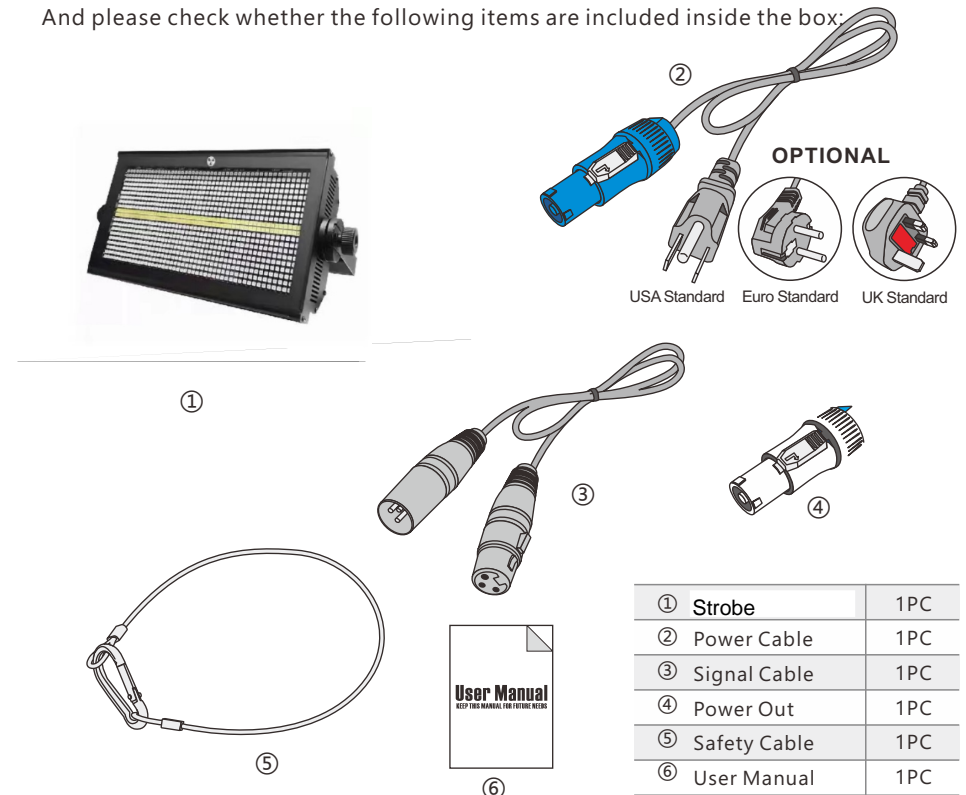
passa geway	Channel value	basic function								
1	000-255	Total dimming								
2	000-255	Three in one stroboscopic								
3	000-255	Three in the first mock exam (see: six, mode effect)								
4	000-255	Three in the first mock exam speed								
5	000-255	Red bead linear dimming								
6	000-255	Green bulb linear dimming								
7	000-255	Blue bead linear dimming								
8	000-255 <td White stroboscopic	9	000-255	White light mode (see VI. mode effect for details)	10	000-255	White light mode speed	11	000-255	White light bulb linear dimming
9	000-255	White light mode (see VI. mode effect for details)								
10	000-255	White light mode speed								
11	000-255	White light bulb linear dimming								

## 2 UNPACKING

Thank you for choosing STROBE RGB960M . For your own safety, please read this manual before installing the device. This manual covers the important information on installation and applications. Please install and operate the fixture with following instructions. Meanwhile, please keep this manual well for future needs.

STROBE RGB960M is made of a new type of high temperature strength of engineering plastics and cast aluminum casing with nice outlook. The fixture is designed and manufactured strictly following CE standards, complying with international standard DMX512 protocol. It's available independently controlled and linkable with each other for operation. And it is applicable for large-scale live performances, theater, studio, nightclubs and discos.

STROBE RGB960M adopts 960\*0.3W 3in1 Leds and 96\*3W White Leds 5700K, which features high brightness and stability. Please carefully unpack it when you receive the fixture and check whether it is damaged during the transportation. And please check whether the following items are included inside the box:



### 3 FEATURES & SPECIFICATIONS

#### Features

- 960\*0.3W 3IN1 LEDs
- 96\*3W White Leds
- 50,000 hours lifespan and low power consumption
- Classic reflector for backlight
- Variable speed multi directional shutter/strobe effect
- Strobe intensity adjustable 0-100%
- Strobe duration adjustable 7-650ms
- Strobe rate adjustable 0.289-16.67Hz
- 0-100% Linear LED dimmer
- Flicker free
- 4 Dimmer curves available (linear, square law, inverse square law, S-curve)
- Built-in pre-programmed effects including beam effect, backlight effect and combination effect
- Multi backlight control options (strobe, dimming, preset colors, color rotation, random colors)
- 4/11/32/39 DMX channel mode
- RDM, DMX512, master-slave and sound activated controllable or auto operation
- LCD display with 4 control buttons
- Powercon IN/OUT
- 3 PIN XLR IN/OUT connection
- Forced air cooling system with user definable fan settings
- -25°C -45°C ambient temperature
- Adjustable high tension metal bracket with two 1/4 turn fastener points and a M12 holes
- Another two 1/4 turn fastener points available on the body
- Ip20 protection rate

#### Specifications

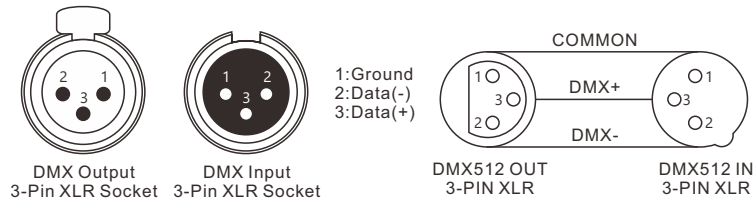
- Input Voltage:** AC100-240V 50/60Hz
- LED Quantities:** 960\*0.3W 3in1 Leds and 96\*3W White Leds
- Control Signal:** DMX512, RDM, master-slave and sound activated or auto operation
- Control Channel:** 4/11/32/39 DMX channel mode
- Power Consumption:** 740W
- Dimensions:** 245(D)\*425(W)\*240(H)mm
- Packing Dimensions:** 230(D)\*490(W)\*320(H)mm
- Net Weight:** 6.96kg
- Gross Weight:** 8.28kg

### 8 MENU OPERATIONS

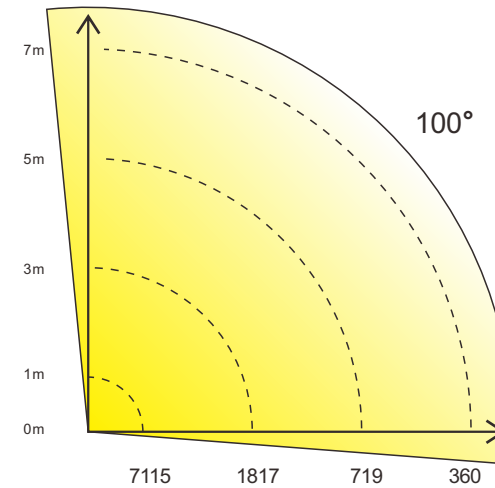
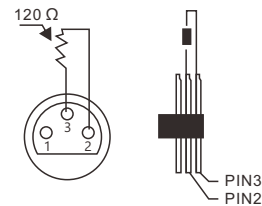
MENU	DMX ADDRESS	001-512		
	CONTROL MODE	EXTENDED		
		3 CHANNEL		
		4 CHANNEL		
	PERSONALITY	DIMMER CURVE	INV SQUARE LAW	
			SQVARE LAW	
			S-CURVE	
		VIDEO TRACKING	LED	
			XENON	
		COOL MODE	REGULATE FANS	
			CONSTANT FAN HIGH	
			CONSTANT FAN MID	
			CONSTANT FAN LOW	
			CONSTANT FAN ULOW	
		DMX RESET	OFF	
			ON	
	DISPLAY	DISPLAY SLEEP		
		DISPLAY NO SLEEP		
	ERROR MODE	SILENT		
		NORMAL		
ART NET	OFF			
	ON			
LANGUAGE	ENGLISH			
DEFAULT SETTINGS	FACTORY DEFAULT	LOAD		
INFORMATION	POWER ON TIME			
	SW VERSION	T08IA-STI-L006		
	RDM UID	04D8:05DDFF38		
	FAN SPEEDS	BASE FAN 1RPM 4500		
		BASE FAN 2RPM 4500		
	BASE FAN 3RPM 4500			
	BASE FAN 4RPM 4500			
	TEMPERATURES	LED Tempstate		
DMX LIVE				
TEST	LEDS			
MANUAL CONTROL				
SERVICE	ERROR LIST	NO ERROR		
	FAN CLEAN	ON		
		OFF		

## 4 PHOTOMETRIC DATA

■ Photometric Beam Angle Data 100° Beam Angle LUX× 0.0929=FC



For installations where the DMX cable has to run a long distance or is in an electrically noisy environment, such as in a discotheque, it is recommended to use a DMX terminator. This helps in preventing corruption of the digital control signal by electrical noise. The DMX terminator is simply an XLR plug with a 120 Ω resistor connected between pins 2 and 3, which is then plugged into the output XLR socket of the last fixture in the chain. Please see illustrations below.



## 5 OPERATION INSTRUCTIONS

- Don't turn on the fixture if it's been through severe temperature difference like after transportation because it might damage the light due to the environment changes. So make sure to operate the fixture until it is in normal temperature.
- This light should be kept away from strong shaking during any transportation or movement.
- Don't pull up the light by only the head, or it might cause damages to the mechanical parts.
- Don't expose the fixture in overheat, moisture or environment with too much dust when installing it. And don't lay any power cables on the floor. Or it might cause electronic shock to the people.
- Make sure the installation place is in good safety condition before installing the fixture.
- Make sure to put the safety chain and check whether the screws are screwed properly when installing the fixture.
- Make sure the lens are in good condition. It's recommended to replace the units if there are any damages or severe scratch.

- Make sure the fixture is operated by qualified personnel who knows the fixture before using.
- Keep the original packages if any second shipment is needed.
- Don't try to change the fixtures without any instruction by the manufacturer or the appointed repairing agencies.
- It is not in warranty range if there are any malfunctions from not following the user manual to operate or any illegal operation, like shock short circuit, electronic shock, lamp broke, etc.

## 6 INSTALLATIONS

**Cautions:** For added protection mount the fixtures in areas outside walking paths, seating areas, or in areas where the fixture might be reached by unauthorized personnel.

Before mounting the fixture to any surface, make sure that the installation area can hold a minimum point load of 10 times the device's weight.

Fixture installation must always be secured with a secondary safety attachment, such as an appropriate safety cable.

Never stand directly below the device when mounting, removing, or servicing the fixture.

from a ceiling, or set on a flat level surface (see illustration below). Be sure this fixture is kept at least 0.5m (1.5 ft) away from any flammable materials (decoration etc.).

Always use and install the supplied safety cable as a safety measure to prevent accidental damage and/or injury in the event the clamp fails.

**Mounting points:** Overhead mounting requires extensive experience, including amongst others calculating working load limits, a fine knowledge of the installation material being used, and periodic safety inspection of all installation material and the fixture. If you lack these qualifications, do not attempt the installation yourself. Improper installation can result in bodily injury.

Be sure to complete all rigging and installation procedures before connecting the main power cord to the appropriate wall outlet.

**Clamp Mounting:** STROBE RGB960M provides a unique mounting bracket assembly, and the safety cable rigging point in one unit (see the illustration below). When mounting this fixture to truss be sure to secure an appropriately rated clamp to the handle using a M10 screw fitted through the center hole of the handle. As an added

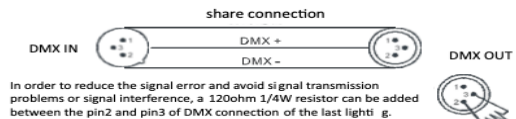
safety measure be sure to attached at least one properly rated safety cable to the fixture using on of the safety cable rigging point.

Regardless of the rigging option you choose for STROBE RGB960M, always be sure to secure your fixture with a safety cable. The fixture provides a built-in rigging point for a safety cable on the hanging bracket as illustrated above. Be sure to only use the designated rigging point for the safety cable and never secure a safety cable to a carrying handle.

## 7 DMX-512 CONTROL CONNECTIONS

Connect the provided XLR cable to the female 3/5-pin XLR output of your controller and the other side to the male 3-pin XLR input of the strobe. You can chain multiple Strobe together through serial linking. The cable needed should be two core, screened cable with XLR input and output connectors. Please refer to the diagram below.

DMX-512 connection with DMX terminator



1. Connect the lightning with the XLR signal line, one end receives the outlet of the light, and the other end receives the input port of the next light. XLR signal lines can only be used in series, not in parallel. DMX512 signal transmission is very fast. The signal line is damaged, the welding place is not secure, the contact is not good, it will affect the signal transmission, causing the system to close.
  2. When a unit of power supply circuit, DMX output and input is by-pass connection, so that can continue to maintain the DMX line connected.
  3. On the last light, the DMX wire needs an amplifier. Welding a 120 - ohm quarter w resistor between pin2 and responsible, within XLR plugs into 3 - pin and insert it in the end of a light DMX.
  4. Each light, want to have an address to receive information from the console, range between 012 (usually 0 and 1 and 1 equal).
  5. The 3-core XLR connector is more common than the 5-core XLR.
- 3 core XLR: PIN 1: GND, PIN 2: negativ signal, PIN 3: positive signal.  
5 core XLR: PIN 1: GND, PIN 2: negativ signal, PIN 3: positive signal, Pin4/5: unused.