

2016 | 2017

# NEW PRODUCTS

SCENIUS UNICO | SCENIUS PROFILE | SHAR-BAR

ENGLISH



# CLAYPAKY 40 YEARS LET'S CELEBRATE THE FUTURE

*Dear Friends,*

*2016 has been a very special anniversary for Claypaky. Forty years ago, in the summer of 1976, our company was officially founded and our compelling history began. Our course over time has been dotted with success and the leitmotif has always been our passion for lights and entertainment.*

*We would like to celebrate this occasion with you and thank all those who have shared these wonderful years with us: our customers, our distributors throughout the world, lighting designers, lighting directors, architects, theatre and TV lighting technicians, production and rental companies, and riggers... in short, all of you who have shown confidence in us by purchasing our lights and who have encouraged us to do better and better.*

*For many people, Claypaky has become an icon and symbol of innovation and quality. I cannot help looking back for a moment and remember some of our products that have made the history of show lighting: the Astroraggi, Astrodisco, Goldenscan, Miniscan, Alpha Profile, Sharpy, B-EYE and Mythos. Their success forms the solid basis on which we intend to face new challenges and achieve new goals.*

*Our enthusiasm is unchanged, and our commitment is – as always – to work for the future. The experience we have gained up to now will merge with new technologies, so that we can celebrate a future packed with innovation and quality.*

Pio Nahum  
CEO - Chief Executive Officer

In today's professional show lighting world, the need to optimize the number of lights installed on rigs is becoming ever greater. The goal is not just to reduce energy consumption but, more generally, to reduce the costs that stem from the complexity of the system. One solution is to use **versatile fixtures**, which are able to perform multiple functions. This is why the "hybrid light" category came about. These lights combine the ability to project visual effects with wash or beam light functions. However, building a "light that can do anything" is a big technical challenge, and was considered impossible for many years. This can be seen from the hybrid lights that became available on the market: compromises had to be made in one or more of their functions, which lighting designers are not always willing to accept.



# SCENIUS UNICO

## MULTIFUNCTIONAL WITH NO COMPROMISE

The masterly skills in the fields of optics and micro-mechanics has allowed Claypaky to take on the challenge without - as is our norm - giving in to compromise, and today we can proudly present a really special **multifunctional light**: the SCENIUS UNICO.

The Scenius Unico is the latest addition to the Scenius family. Therefore, its first highly appealing feature is the quality of its light, regardless of the use mode. Like the other Scenius models, it fits a 1400 Watt 6500K Osram lamp, with a wide

color spectrum and very high CRI. Its CMY system with linear CTO and wheel with seven selected colors produce a rich palette of colors of all shades, as needed for professional applications.

The Scenius Unico is first of all a magnificent **spot light** for projecting effects, with 6 rotating gobos and a beautiful animation wheel, which brings out the fixture's optical perfection. It is also equipped with the most sophisticated and most precise **framing system** on the market today, the same one as

found in the Scenius Profile, which won the Award for Innovation at Plasa 2016.

The Scenius Unico is also an excellent **wash light**, since it features a system with different grade diffusion filters, which may be inserted gradually. They progressively soften the light beam and distribute the light uniformly, minimizing the loss in brightness. Wash mode is also excellent in combination with the framing system.

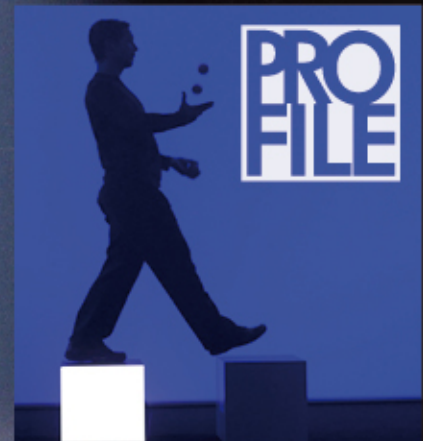


However the most amazing feature is that the Scenius Unico can also generate a **powerful narrow beam of super concentrated light**, with a minimum beam angle of only 5 degrees. This beam is highly visible even hundreds of yards away since the light leaves the fixture through a 180 mm (7 inch) diameter PC lens. Moreover, you can reduce the size of the beam with a high precision sixteen-blade iris. Thanks to these features, the Scenius Unico produces exceptional aerial effects with both narrow and fat parallel beams. The Scenius Unico's zoom allows

beam angles ranging from 5° up to a maximum of 50°, with a slow or very fast linear excursion and exclusive

focus tracking system. The numerous built-in effects cut through the air with great success even at the maximum beam angle. An excellent 16-bit dimmer completes this brand new light's features.

This is the Scenius Unico: Claypaky's powerful top-of-the-range fixture which combines extraordinary light quality with unequalled versatility, without compromise! The ideal tool for every application from big live events to fixed installations, where versatility means huge savings. The perfect tool at last for the most demanding lighting designers.



## SPECIFICATIONS

- Multifunctional light
- 1400W Osram discharge lamp
- 6500 K output color temperature
- High quality of light
- 180 mm Ø front lens
- 5°- 50° linear zoom
- Focus tracking system
- CMY System + Linear CTO
- 7-color wheel
- Framing system operating on 4 focal planes
- Framing system indexing on 90°
- 6 rotating gobos
- Rotating prism
- Graphic animation wheel
- 16 blades fast Iris
- Variable "soft edge" frost
- Variable flood frost
- Very precise 0-100% dimmer
- Fast stop/strobe effect
- Light can be run at 1400W or 1200W
- Art-Net / RDM

## WEIGHT AND DIMENSIONS

■ 42 Kg (92.6 lbs)

mm (LxWxH): 410 x 442 x 804

inches (LxWxH): 16.14 x 17.4 x 31.65

January 2017

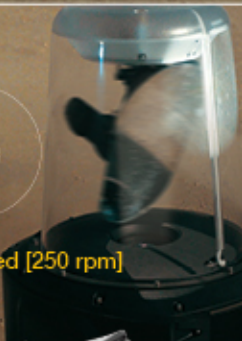
Subject to change without notification



Non-stop moving mirror pan



Sensational speed [250 rpm]



Grazing light effects\*



Suitable for outdoor use [IP54]



We invented the Golden Soan, back in 1989. Today we have done even better.

# SPHERISCAN A LEGEND IS BACK.

SPHERISCAN, the new Claypaky scanner, is back with a wealth of those values that produced the legend.

Powerful, innovative, technologically ground-breaking Spheriscan provides the same optical performance and graphic effects found in a moving-head, together with the sensational speed, acceleration and agility that only a moving mirror is capable of. With its versatility of use, the Spheriscan is a star of the contemporary lighting scene and has inherited all the reliability of one of the cult fixtures in the Claypaky family.

With its unique 360° non-stop moving-mirror pan, which is incredibly fast, accurate and more agile than ever, and a strong body that resists any weather conditions (IP54), the Claypaky scanner has been re-invented, powered by an ultramodern, eco-friendly 1400 W Osram lamp.

Discover the Spheriscan, the fresh approach to moving mirror technology.

\* For a correct recessed application follow the instructions of the product's technical manual.







Harmony needs balance, silence, and quality of light.



# SCENIUS

The sound of light

Music spreads into the surrounding silence, and a harmonious light radiates into the darkness of the scene. In a play on perfect symmetries, light too varies its tones. Balanced intensities, soft shades, vivid colors, perfect white, accurate diffusions, fancy shapes...

Listen: this is the Scenius, the harmonious sound of light.





# SCENIUS PROFILE

MAXIMUM VERSATILITY OF USE FOR A HIGHER QUALITY LIGHT

Scenius Profile is the new beam shaper at the top of the Claypaky moving head range. The optical reflector has been designed specifically for this product, in order to make the projection perfectly uniform across the whole beam opening, avoiding the typical hotspot effect of many spotlights.

This advanced optics and the 1400W Osram discharge lamp provide very high light output and CRI. The fixture produces a 6500 K color temperature; the white and colored light produced are of the highest quality. The colors may be added very smoothly and linearly and cover a broad spectrum, even including pastel shades,

thanks to a CMY system, a 7-color wheel and a linear CTO filter. Thanks to its wide 8°-50° zoom, Scenius Profile is perfect for every set. A modern focus tracking system concentrates maximum luminous efficiency precisely on the effect you wish to project, and the focus may be set to be fully automatic.

Its framing system consists of 4 independent overlapping blades that create shapes of all sizes, not just quadrangular, but also triangular. It works simultaneously on four different focal planes and the exclusive "curtain effect" allows gradual total closure of the shape using any one of the four blades. The shape made

may also be turned around itself up to an angle of 90°, either to change its orientation or keep it fixed as the light beam moves. The framing opportunities are further enhanced by using a fast, highly precise and accurate iris, allowing users to transform the projected light linearly into circular shapes.

The Scenius has a soft-edge frost filter (particularly useful on gobos), and a newly developed frost filter for a highly effective washlight effect. Other features include 14 interchangeable gobos – 6 rotating and 8 fixed – a 4-facet rotating prism, and stop-strobe effect.

## SPECIFICATIONS

- 1400W Osram discharge lamp
- 6500 K output color temperature
- Very high CRI
- New optical reflector to ensure perfectly uniform beam projections
- 8°- 50° zoom
- Focus tracking system
- CMY System + Linear CTO
- 7-color wheel
- Framing System operating on 4 focal planes
- Framing System indexing on 90°
- 14 gobos (6 rotating + 8 fixed)
- 4-facet Rotating Prism
- 16 blades fast Iris
- Variable "soft edge" frost
- Variable flood frost
- Very precise 0-100% dimmer
- Fast stop/strobe effect
- Light can be run at 1400W or 1200W
- Art-Net / RDM

## WEIGHT AND DIMENSIONS

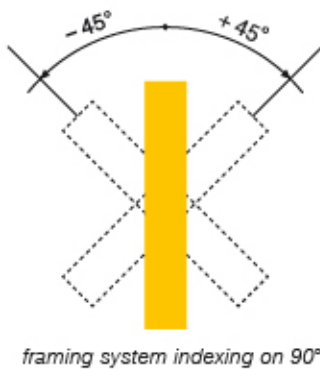
■ 39.5 Kg (87 lbs)

mm (LxWxH): 410 x 442 x 760

inches (LxWxH): 16.14 x 17.4 x 29.92

## FRAMING SYSTEM

Scenius Profile features a precision micromechanics framing system that ensures perfect repeatability and does away with continuous manual adjustments.



square



rectangle



diamond



triangle



slice



curtain 1



half circle



curtain 2



open curtain



ribbon



square-corner  
trapezium



trapezium



# MYTHOS<sup>2</sup>

NEW HEART, NEW LIFE\*



**SUPERHERO ID**

**NAME** MYTHOS<sup>2</sup>

**MISSION** THE MOST ADVANCED EFFECT MOVING LIGHT

<b>LAMP</b>	Osram Sirius HRI 440W discharge lamp
<b>OPTICS</b>	160mm Ø front lens
<b>SPOT</b>	4°- 50° electronic zoom (Spotlight mode)
<b>BEAM</b>	2.5° aperture and "pipe" effect (Beam mode)
<b>FOCUS</b>	Perfectly sharp focusing along the entire beam length
<b>WASH</b>	Frost filter for soft-edge projection (Wash mode)
<b>COLORS</b>	CMY color mixing + 14 colors on 3 wheels
<b>GOBOS</b>	6 HQ dichroic rotating gobos and 18 fixed metal gobos
<b>EFFECTS</b>	Advanced visual effect disc (animation disc)
<b>PRISMS</b>	2 indexable rotating prisms (8-facet and linear 4-facet)
<b>DIMMER</b>	Enhanced, very smooth 0-100% dimmer



\*Fully compatible with the Mythos.





**Red Hot Chili Peppers - 2016 Tour**  
Fixtures used: A.leda B-Eye K20  
LD: Scott Holthaus



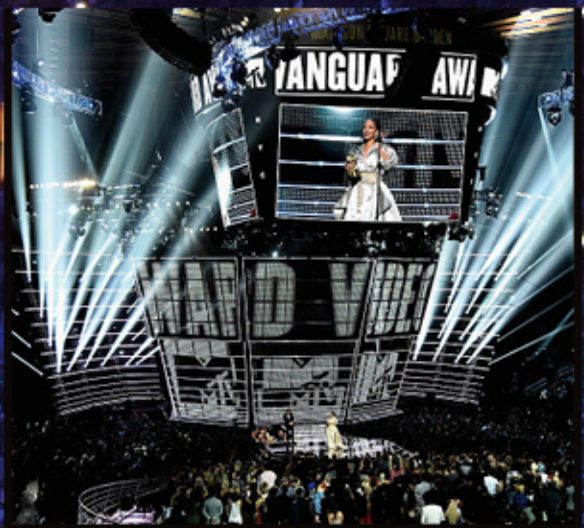
**Eurovision Song Contest 2016**  
Fixtures used: Scenius Spot, Mythos, Sharpy, Sharpy Wash 330  
LD: Fredrik Jönsson



**Osram and The Westin Excelsior Rome 110-year anniversary**  
Fixtures used: Mythos, A.leda B-Eye K20, GlowUp Strip, GlowUp  
LD: Giovanni Pinna



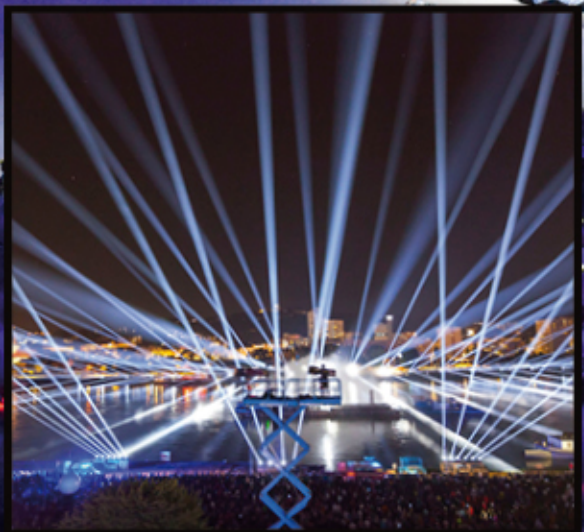




**2016 MTV Music Awards**  
Fixtures used: Mythos, Sharpy  
LD: Bob Barnhart



**Bolshoi Theatre - LaScala Summer Tour 2016**  
Fixtures used: A.leda Wash K20, Alpha Profile, Alpha Wash  
LD: Marco Filibeck and Valerio Tiberi



**2016 Linz Cloud of Sound**  
Fixtures used: Mythos  
LD: Björn Hermann

**2016 Rio Olympic Games Opening and Closing Ceremonies**  
Fixtures used: Mythos, Sharpy, Sharpy Wash 330,  
Alpha Profile 1500, Alpha Beam 1500  
LD: Durham Marengi





# SHAR-BAR

## THE MOST CREATIVE LED-BAR EVER

True to its tradition, Claypaky presents a fixture that creates never-seen-before effects. The SharBar is an advanced moving LED batten which allows lighting designers to bring new effects to their shows.

Its first innovative feature lies in the light sources used. The SharBar fits six brand new 30W Osram Ostar RGBW LEDs.

This has allowed Claypaky to build a really powerful bar, which is also compact. The SharBar has a 240° motorised tilt with super fast, very smooth movements (240° in as little as 0.2 seconds). However the most stunning effects are those created by the special optical unit made by Claypaky, which includes a motorised optical zoom capable of a minimum beam angle of only

2°. Thanks to its extraordinary lenses, the SharBar generates six very narrow, dense light beams. It is as if there were six beam lights, each freely shooting into the air. No comparable LED bar is able to produce a similar effect. The SharBar may also be used to create sharp patterns, even when projected onto a surface.

### BUT THERE IS AN EVEN MORE SURPRISING FEATURE!

The optical unit coupled to each LED consists of a motorised system with double mirror. This means each beam

of light may be directed independently of the others, thus adding a further degree of freedom to the bar movement.

Each of the six light beams can move or be locked within a 60° (+/-30°) cone. Thanks to this ingenious, original opti-

cal unit, the LED bar produces an effect similar to six separate lights, which can work synchronously or asynchronously with respect to each other.

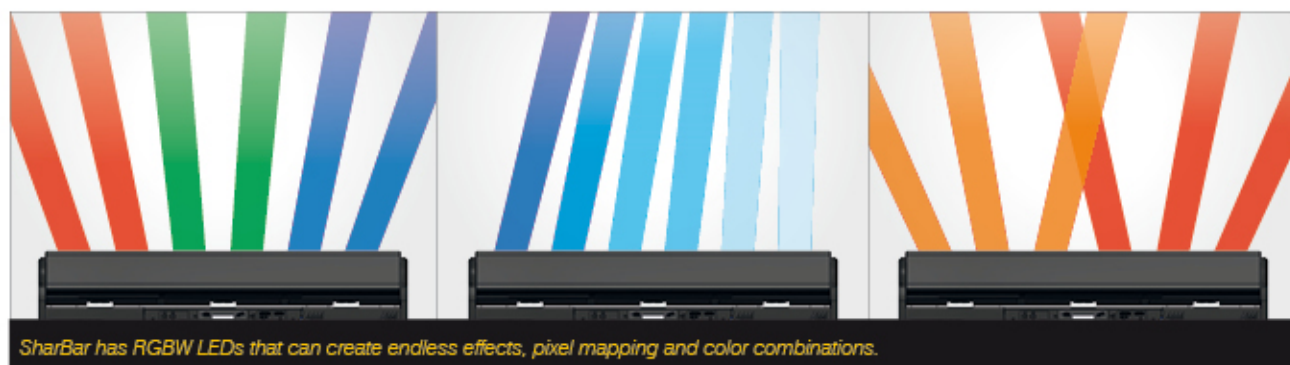
Even further creative freedom stems from the fact each LED has its own control for all parameters: color, 16-bit intensity and 24 Hz strobe (1-24 flashes/

second).

The color is created through RGBW channels and the color temperature can be adjusted linearly, thanks to a dedicated CTO channel. Programming is made easy with a wide range of color, effect and movement macros.

The SharBar produces truly innovative

lighting effects and stands out for its high light output and extremely concentrated or diffuse beam. It can work in a horizontal or vertical array and produce endless combinations of fixed or moving beams with countless colors at innumerable angles.



## SPECIFICATIONS

- Light source: 6 Osram Ostar LEDs driven at 30 Watts
- It may be rigged in a horizontal or vertical array with constant spacing
- 2° beam opening and motorised zoom
- Double-mirror optical unit
- Motorised 240° tilt
- Independent RGBW system for each LED
- CTO on dedicated channel
- 16-bit dimmer and 24 Hz strobe (1-24 flash/second)
- Control inputs: DMX cable, Art-Net on Ethernet
- Standard input sockets: Powercon in/out, DMX in/out and Ethernet in/out (Art-Net protocol with internal switch)
- User interface: graphic display with four buttons
- Backup battery for continuous Ethernet power supply
- Rotating bar structure: extruded aluminium heat sink with forced ventilation
- Quick fit horizontal and vertical hooks for fitting together in arrays, with possible inward and outward rotation
- Adjustable ground positioning pedestal
- Sockets are arranged within the bar structure itself to prevent interference with adjacent trusses or bars when rotating

## WEIGHT AND DIMENSIONS

■ 15 Kg (33 lbs)

mm (LxWxH): 1000 x 170 x 260  
inches (LxWxH): 39.37 x 6.69 x 10.24



# TURN ARCHITECTURE INTO A SHOW



## TURN ARCHITECTURE INTO A SHOW

City beautification is now a global phenomenon involving ever greater numbers of lighting professionals. It is often supported by local governments, which see it as a way of making their cities more attractive and strengthening their relationship with citizens. Now Claypaky has enriched its product range with a line of fixtures

for architectural use, that will be further extended in the near future.

This line, which has its own catalogue, includes: powerful projectors for architainment, portable battery-powered color changers for temporary installations, floodlights and a linear LED bar series. The latter two are IP65 architectural

fixtures, which are designed for architects on the basis of their requirements and their needs. They come in a range of more than sixty models.

Enter the world of Claypaky Architecture: seduce with the power of colors and add a touch of glamorous light to your architectural designs!





Photo © Antonio Milesi



### **SPHERILIGHT: make architecture become a show**

Spherilight is an arc-lamp powerful spotlight for outdoor use (IP54), designing with light, colors and effects in urban settings, emphasizing a brand name, highlighting a directional or advertising sign.

### **GLOW-UP: glamour events, easily anywhere**

GlowUp is a portable, IP65 LED uplighter, whose simple, neutral design helps it blend into any type of environment. Available in three versions (RGBW, Tunable White, White) and three finishings.

### **ODEON: seduce with the power of colors**

Odeon is a range of IP65 LED lights for architectural use (flood and linear versions), available with narrow, medium, wide and elliptic optics, featuring RGBW, Tunable White and Total White configurations.



# SCENIUS UN1CO



## MAKING POSSIBLE OUT OF IMPOSSIBLE



CLAY PAKY S.p.A. - I - 24068 Seriate (BG) - Via Pastrengo, 3/b  
Phone +39 035 654311 - Fax +39 035 301876  
[www.claypaky.it](http://www.claypaky.it) - [Info@claypaky.it](mailto:Info@claypaky.it)

Follow us on:

