

DALIS ACCESS - 863

DALIS - 4 COLOUR LED 150W



- **Type:** Cyclight
- **Source:** 4 colour LED 150W
- **Optics:** Asymmetric

Cyclight

Your access to the DALIS technology!

Dalis 863 Access is a 150W LED batten designed to give small-sized venues or those with smaller budgets the first access to Dalis technology. Sharing all the technology as the original Dalis 860 Cyclorama fixture, Dalis Access 863 features a four-colour mixing system and 24 of the patented Dalis asymmetrical micro-reflectors, but otherwise all the functionality and quality of the original. The batten delivers powerful, smooth coverage and a fair variety of pastel and saturated colours. It incorporates four coloured LED emitters (red, green, royal blue and warm white 2200K). Equipped with an advanced fanless cooling system, Dalis Access is equally perfect for cyclorama or footlight applications.

Features

- **16-bit control of each colour:** precision dimming on every colour
- **Linear dimming curve:** no colour fading during dimming
- **Adjustable response time:** choice of fast or slow dimming for tungsten-like simulation - adjustment by DMX protocol
- **Control of up to 4 groups:** colour variations with smooth transition by separating the unit into 2 or 4 sections
- **Strobe:** independent control of speed and duration
- **Ethernet-DMX node:** data IN through RJ45 connector; data OUT through DMX for daisy chaining
- **Universal data control:** compatible with DMX, RDM, Art-Net, sACN protocols
- **Remote setup:** all parameters can be adjusted by RDM protocol
- **Angular sensor:** tilt angle displayed for perfect alignment of all the units
- **Auto Flip Mode:** automatic flip over of the group sections depending on the positions of the unit for easy programming
- **Dimming parameters:** choice of square or linear dimming curves
- **Vertical mounting possible:** allows easy creation of vertical colour fades (horizontal lines) – for sunrise / sunset creations
- **Adjustable feet:** can be installed directly on the floor; simple retractable foot mechanism to aid floor focusing

Optical

- **Exclusive patented optical system:** 24 micro optical asymmetric reflectors delivering superbly smooth coverage across any surface
- **High efficiency:** massive light output, small power consumption
- **Long life:** outstanding operational lifetime expectation, no need to replace lamps, low maintenance
- **High transmissive coated protective glass window:** ensures optimal light transmission
- **Directional light:** allows creation of accurate linear sections
- **Electronic dimmer:** dimming without clipping or cut-out at low intensity levels; high quality smoothing

Construction

- **Made in Europe:** control over all aspects of quality
- **PSU:** built-in electronic flicker-free power supply for easy, plug-and-play installation
- **Power connectors:** neutriK® powerCON TRUE1 TOP IN and OUT connectors for daisy chaining; delayed power out switching against inrush current
- **Perfect integration on stage:** compact size - all controls and connections are under the unit to maintain clean sight lines
- **Fanless system:** convection cooling- perfect for sound sensitive applications - less maintenance required
- **Electronic thermal management system:** ensures maximum performance of the system without any risk of overheating
- **Lightweight and compact:** easy to install in a row directly on the floor or hung on lighting bar

Picture:863

DSEN294_863 - 23/03/2022

Robert Juliat reserves the right to change or alter any of the items detailed on this page, to increase or improve manufacturing techniques without prior notice.

Robert Juliat S.A.S., 32 rue de Beaumont, 60530 Fresnoy-en-Thelle - France
Telephone : +33 (0)3 44 26 51 89 - fax : +33 (0)3 44 26 90 79 - info@robertjuliat.fr
www.robertjuliat.com



ROBERT JULIAT

- **Lamp type:** LED - 4 colours
- **Life:** 40000 hours (LM70)

Colours	Power *	Lumen output*	Colour temperature*	CRI* (min)
Red				
Green				
Royal blue				
Warm white			2200K	80

(*) manufacturer's data

Optics

Characteristics

- **Type:** Asymmetric
- **Horizontal spread:** °
- **Vertical spread:** 90°

Installation and photometrics

Remote control

• **Data protocol:** USITT DMX512-A
RDM / Art-Net / sACN

• **Data IN connector:** 5 pins XLR mâle + etherCON RJ45
• **Data OUT connector** 5 pins XLR femelle



• DMX chart:

Mode 1 (38 channels)

Dimmer @16b
Group1: 4 RGBW @16b
Group2: 4 RGBW @16b
Group3: 4 RGBW @16b
Group4: 4 RGBW @16b
Strobe: duration+speed
Response time
Control mode

Mode 2 (14 channels)

Dimmer @16b
RGBW @16b
Strobe: duration + speed
Response time
Control mode

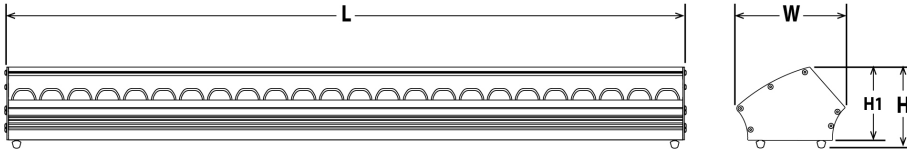
Mode 3 (9 channels)

Dimmer @8b
RGBW @8b
Strobe: duration + speed
Response time
Control mode

Mode 4 (40 channels)

Group1: dimmer @16b
Group1: RGBW @16b
Group2: dimmer @16b
Group2: RGBW @16b
Group3: dimmer @16b
Group3: RGBW @16b
Group4: dimmer @16b
Group4: RGBW @16b

Dimensions and weight



Weight: 8.2 kg (18 lbs)

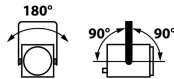
Height	Length	Width	Yoke	Tilt
H= 117 mm (4.6 in) H1= 105 mm (4.1 in) H2= 137 mm (5.4 in)	L= 1005 mm (39.6 in)	W= 155 mm (6.1 in)		TU= 10° TD= 10°

Shipping

- **Weight :** 9.3 kg (20.5 lbs)
- **Volume :** .05 m³ (1.83 ft³)

Installation

- **Minimum distance to illuminated surface:** 0.2 m (0.7 ft)
- **Operating position:**



Construction

- **Housing:** Steel sheet - Aluminium
- **Colour:** Black
- **Cooling:** Convection cooling
- **Maximum ambient temperature (Ta):** 40°C (104°F)
- **Maximum case temperature (Tc):** 60°C (140°F)
- **Total heat dissipation:** 454 BTU/h
- **Ingress Protection (IP) rating:** IP20

Electrical compatibility

- 220/230 V - 50 Hz
- 245 V - 50 Hz
- 110/120 V - 60 Hz
- 208 V - 60 Hz
- 220/230 V - 60 Hz
- 100 V - 50 Hz
- 100 V - 60 Hz
- Selector: automatic detection

Power input



- **Type:** Neutrik powerCON TRUE1 TOP (connector included)

Power consumption

Voltage	Frequency	Current	Power	Power factor
230 V	50 Hz	0.7 A	133 W	0.82
120 V	60 Hz	1.2 A	137 W	0.93
100 V	60 Hz	1.5 A	138 W	0.93

Power Supply Unit

- **PSU:** Internal - Electronic PSU - Flicker free with PFC
- **Control:** Local / DMX
- **Protection:** -
- **Power thru:** Neutrik powerCON TRUE1 TOP - Maximum of 20 units (230 V) / 10 units (120 V)

Warranty

- **Fixture: 3 years**
See General Sales Condition on website


Approvals



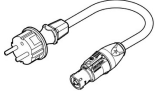

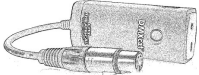





Model

863	4 colour LED 150W Cyclight - 863 Dalis Access
------------	---

Options

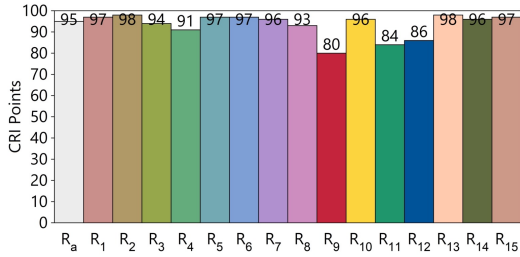
FC860	Flight-case for 6 Dalis / accessories - Dim: 1230x590x560mm - Weight: 36 Kg	
--------------	---	---

Accessories

CAL03	3 meter power cable (3G1,5 HO7RNF) with Neutrik PowerCon® True1 and CEE 7/7 (2P+T NF/SCHUKO) connectors - Poids: 0.55 Kg	
CAL05	Combined Neutrik PowerCon® True1 / DMX (5 pins) patch cable - length: 1m	
DMXcat	Bluetooth DMX/RDM Multifunction test tool - City Theatrical DMXcat®	
FC860/S	Flight-case for 6 Dalis / accessories - Poids: 36 Kg	
872	Doughty "Twenty clamp" with M10 screw/nut for Ø48 to 51mm pipes - SWL: 20Kg - TÜV approved - Poids: 0.25 Kg	
AccessRig	Rigging hardware set (872 clamps x2 + screws + PECS x1 + CS2 x1)	
CS2	Safety cable Ø3 mm L= 600mm - SWL: 75 Kg	
PECS	Safety cable attachment point + M10 screw + nut indicator	

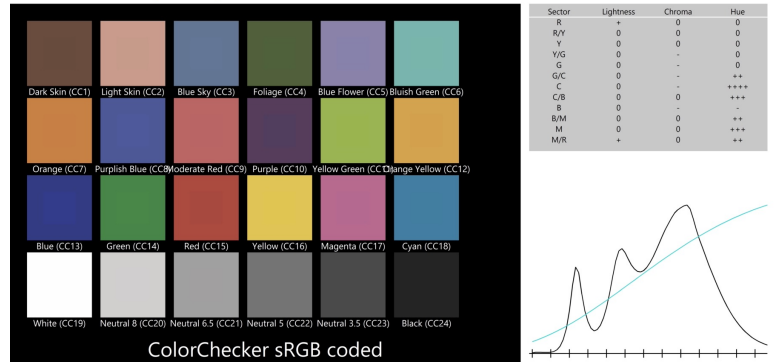
CCT	DeltaUV	CRI Ra	CRI R9	CQS Qa	TM30-18 Rf	TM30-18 Rg	TLCI
3 150K	-0.0010	95	80	94	93	105	86

CRI - CIE Colour Rendering Index

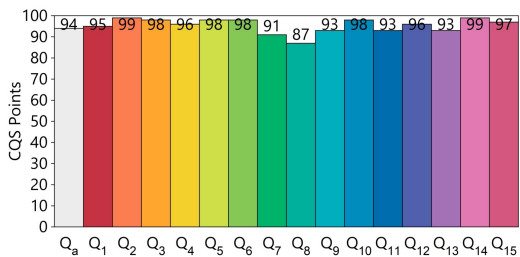


TLCI - Television Lighting Consistency Index

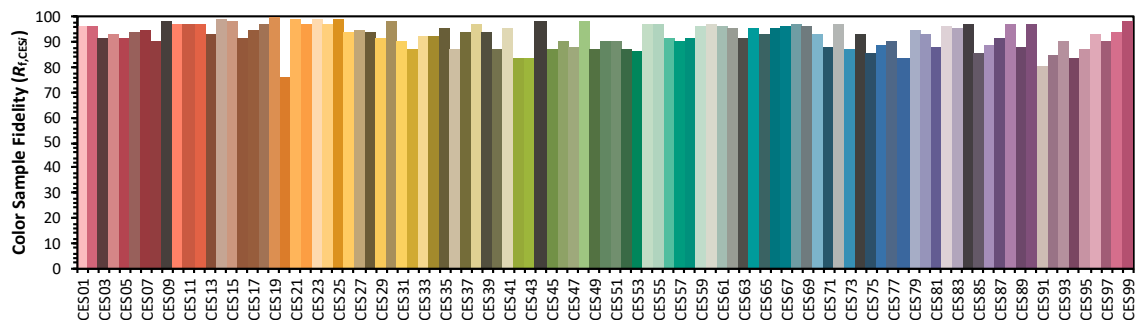
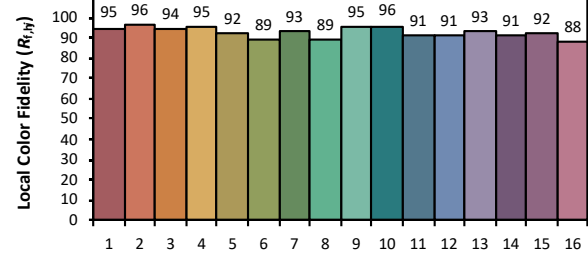
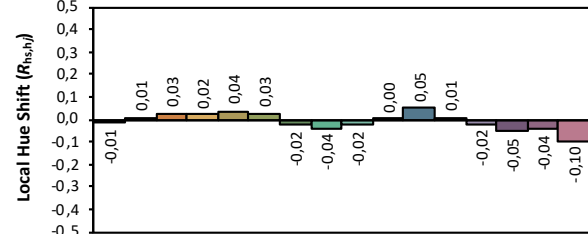
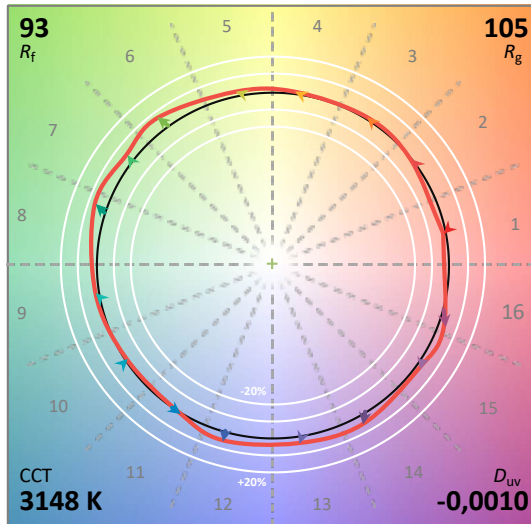
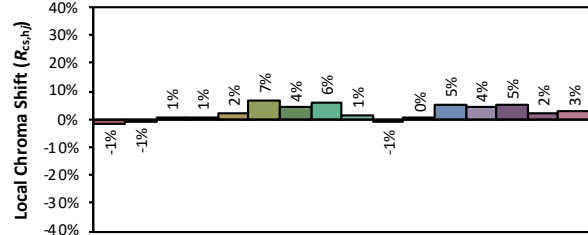
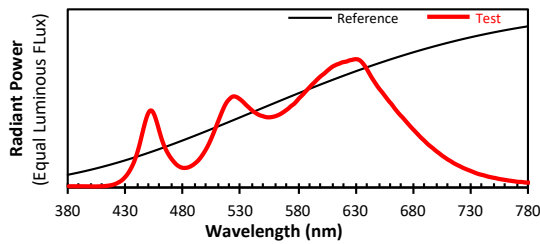
Test : CCT = P3148 (-0.2)
 TLCI-2012 : 86 (P3148)



CQS - NIST Colour Quality Scale



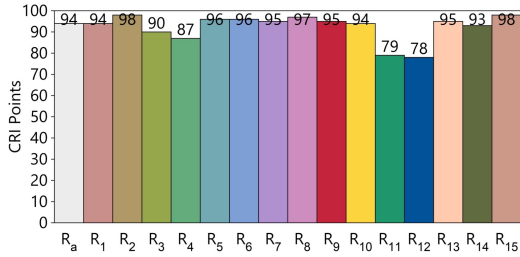
ANSI/IES TM-30-18 Colour Rendition Report



Colours are for visual orientation purposes only. Created with the IES TM-30-18 Calculator Version 2.00

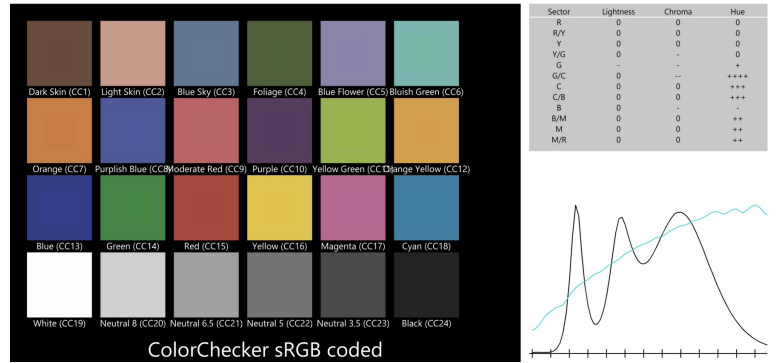
CCT	DeltaUV	CRI Ra	CRI R9	CQS Qa	TM30-18 Rf	TM30-18 Rg	TLCI
3 906K	-0.0021	94	95	94	92	106	85

CRI - CIE Colour Rendering Index

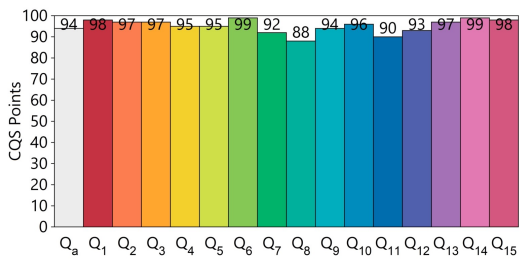


TLCI - Television Lighting Consistency Index

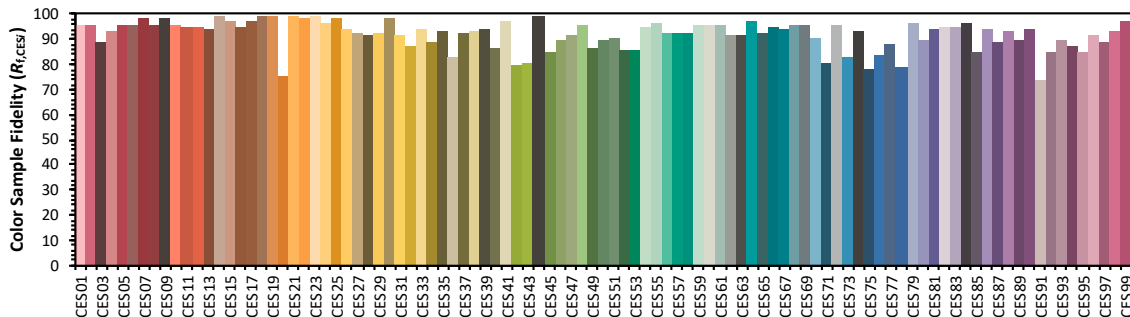
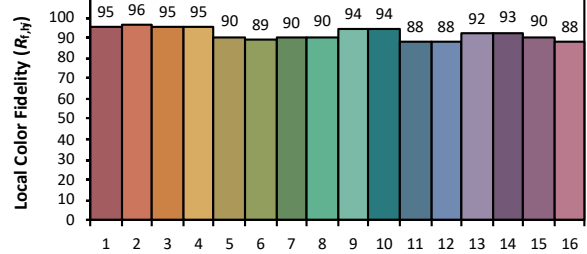
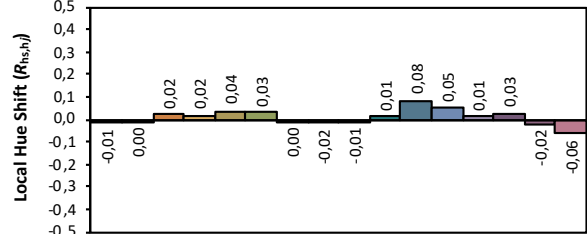
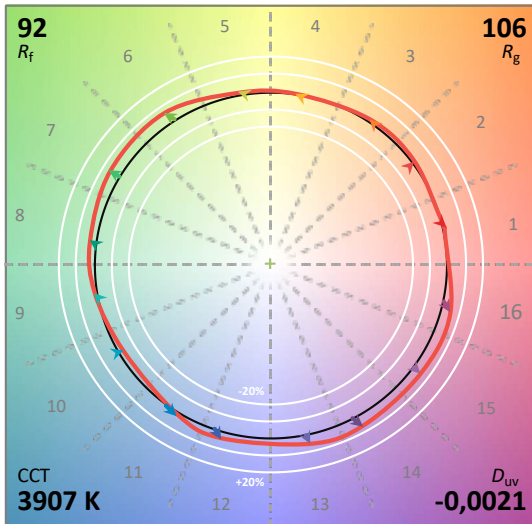
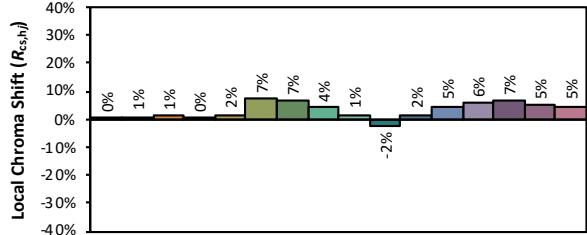
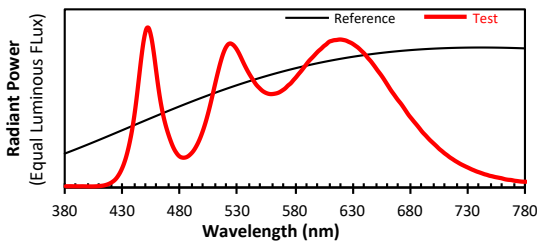
Direct spectrum input : CCT = M3907 (-0.4)
 TLCI-2012 : 85 (M3907)



CQS - NIST Colour Quality Scale



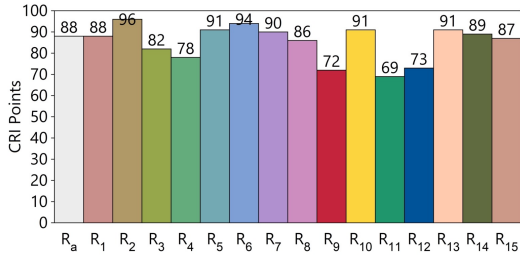
ANSI/IES TM-30-18 Colour Rendition Report



Colours are for visual orientation purposes only. Created with the IES TM-30-18 Calculator Version 2.00

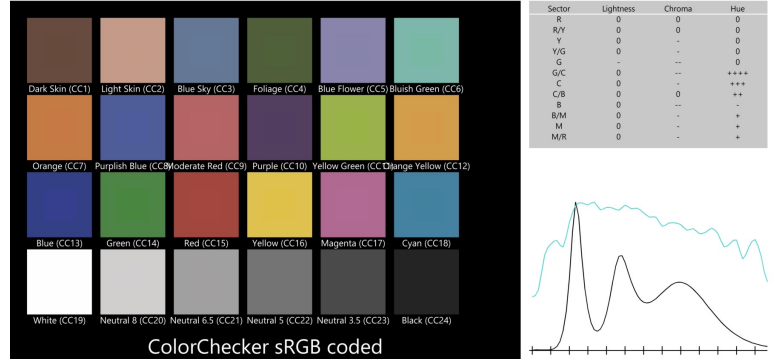
CCT	DeltaUV	CRI Ra	CRI R9	CQS Qa	TM30-18 Rf	TM30-18 Rg	TLCI
5 870K	-0.0034	88	72	92	88	109	86

CRI - CIE Colour Rendering Index

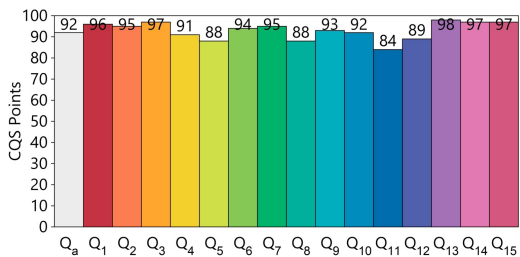


TLCI - Television Lighting Consistency Index

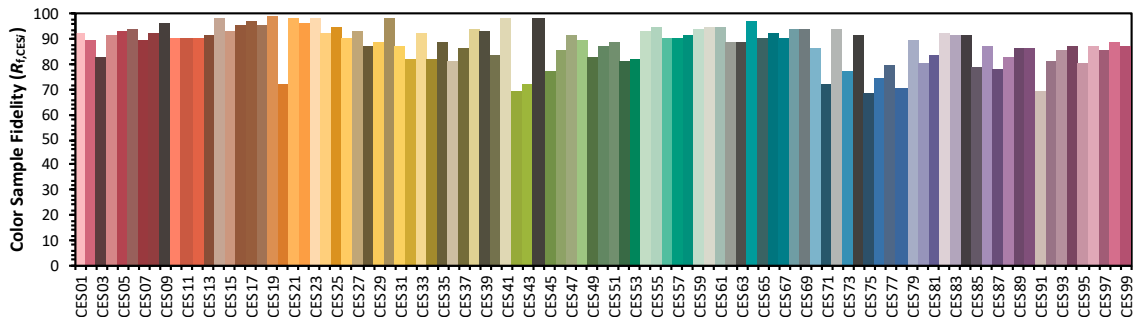
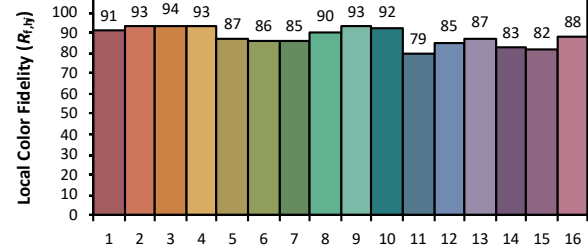
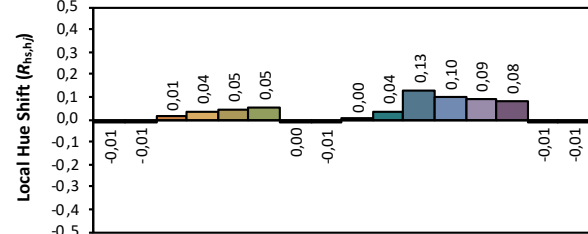
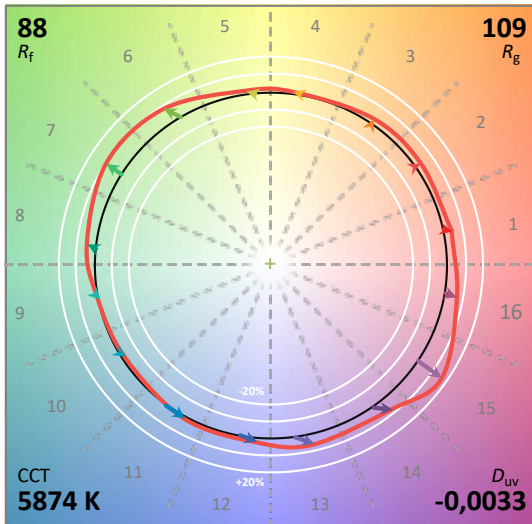
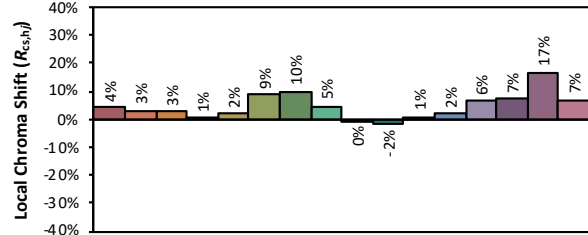
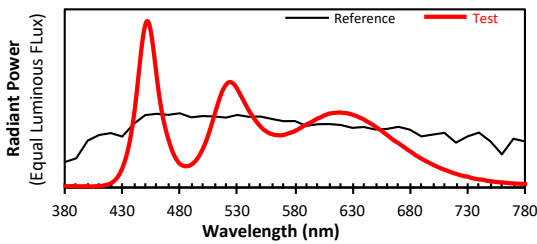
Test : CCT = D5873 (-1.2)
 TLCI-2012 : 86 (D5873)



CQS - NIST Colour Quality Scale



ANSI/IES TM-30-18 Colour Rendition Report



Colours are for visual orientation purposes only. Created with the IES TM-30-18 Calculator Version 2.00